

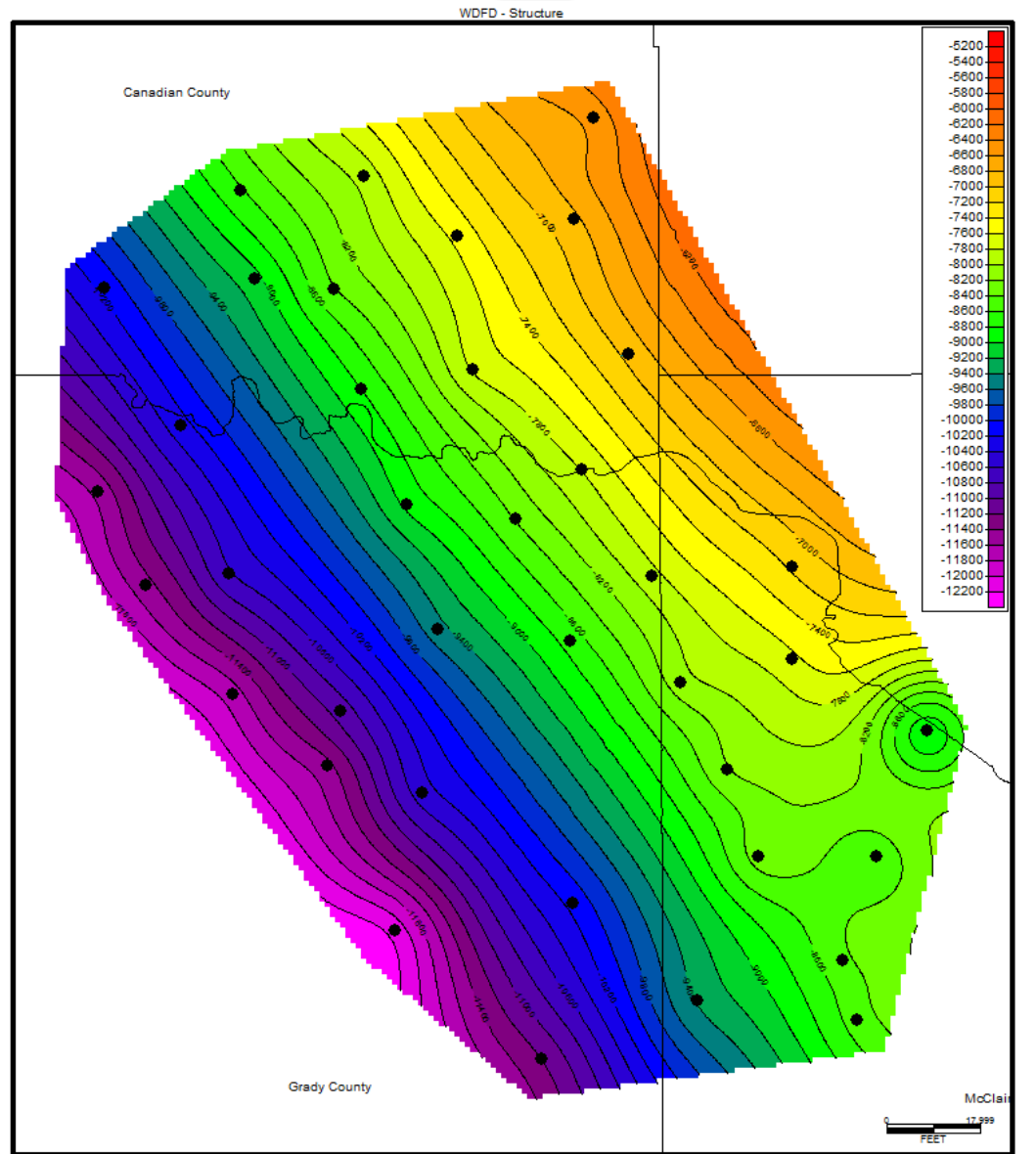
# MERGE STUDY

## Formations:

- Miss
- Woodford
- Hunton

## Deliverables:

- Petrophysical Analysis
- Rock Geomechanics
- Cross Sections



38 Wells

For information on NUTECH's studies, email us at [info@nutechenergy.com](mailto:info@nutechenergy.com), or call 281.812.4030

  
**NUTECH**  
VISIONARY RESERVOIR INTELLIGENCE

[www.nutechenergy.com](http://www.nutechenergy.com)