

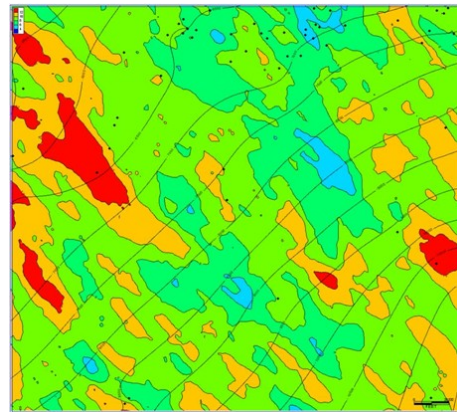
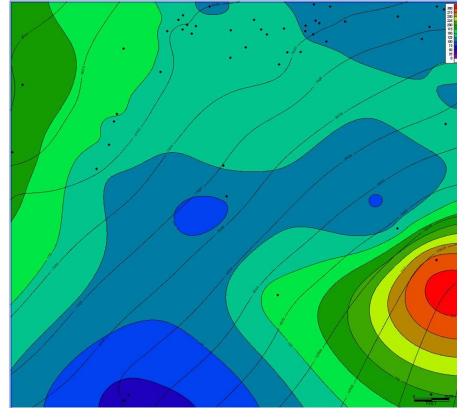
# The Niobrara Regional Shale Studies

*NuTech Energy Alliance offers a library of studies including, Eagle Ford, Haynesville, Marcellus, and Utica studies.*

The Denver-Julesburg Basin covers a large portion of Northwestern Colorado as well as Southeastern Wyoming and Nebraska.

The Powder River Basin is comprised of northeast Wyoming and southeastern Montana.

These studies provide a petrophysical and geological analysis of 88 wells in the DJ Basin and 66 wells in the Powder River Basin that allow insight into the connectivity of textural attributes of the wells with NuLook Shale Vision® and NuView® 3D Reservoir Vision. Also available to supplement the study is a GeoTextural rock property analysis that addresses the geomechanical properties of the Niobrara section.



#### **Features:**

- **3D Structural Model**
- **Stratigraphic Cross Section**
- **3D Petrophysical Property Distribution Model**
- **Utilizes NuLook Shale Vision® and NuView 3D Reservoir Vision®**
- **Includes information on 88 wells in the DJ Basin, and 66 wells in the Powder River Basin**

NuTech Energy Alliance  
7702 FM 1960 East, Suite 300  
Humble, Texas 77346  
Office: 281-812-4030  
[nutechenergy.com](http://nutechenergy.com)

For more information on all of the area studies or to learn more about building your own area study, please visit [nutechenergy.com](http://nutechenergy.com).