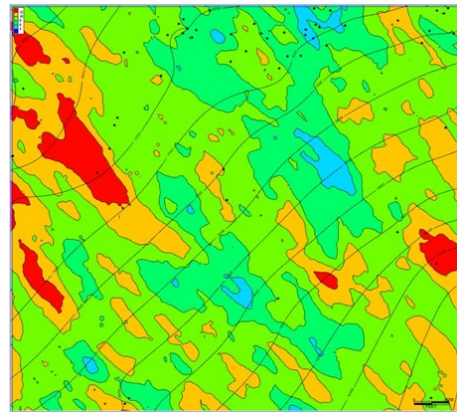
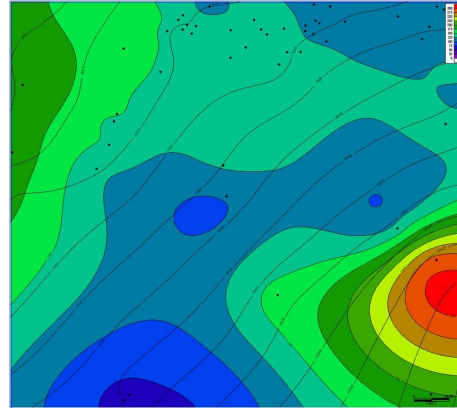


The Marcellus Regional Shale Study

NuTech Energy Alliance offers a library of regional studies including, Eagle Ford, Haynesville, Niobrara, and Utica formations.

The Marcellus Formation was deposited during the Middle Devonian Period about 390 million years ago in the Appalachian Basin of Eastern North America. This formation has been known to be one of the primary source rocks in the area for the associated conventional reservoirs (e.g. Oriskany). However, over the past few years, the Marcellus has evolved into a legitimate hydrocarbon play as a result of the application of improved horizontal drilling and fracture stimulation technologies. Recent work has shown that there is also a liquid hydrocarbon component in the Marcellus in select areas.

Through the combined use of NuLook Shale Vision and NuView 3D Reservoir Vision, this study provides a petrophysical and geological analysis of over 140 Marcellus penetrations that allows one insight into the critical reservoir rock properties as well as hydrocarbon potential for the area. Also available to supplement the study is a GeoTextural rock property analysis that addresses the geomechanical properties of the Marcellus interval.



Features:

- 3D Structural Model
- Stratigraphic Cross Section
- 3D Petrophysical Property Distribution Model
- Utilizes NuLook Shale Vision® and NuView 3D Reservoir Vision®
- Includes information on three different areas consisting of a total of 143 wells

NuTech Energy Alliance
7702 FM 1960 East, Suite 300
Humble, Texas 77346
Office: 281-812-4030
nutechenergy.com

For more information on all of the area studies or to learn more about building your own area study, please visit nutechenergy.com.