

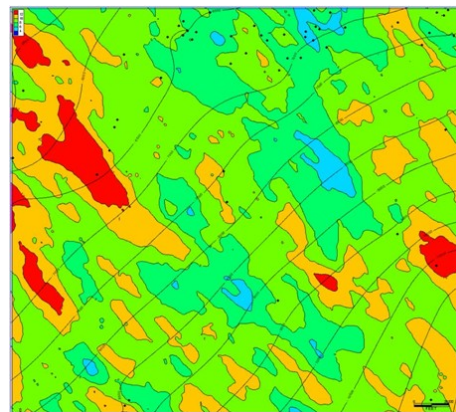
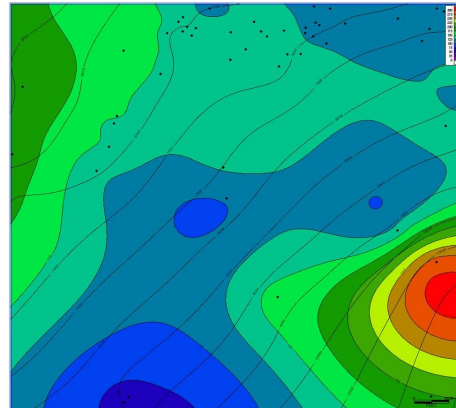
The Haynesville Regional Shale Study

NuTech Energy Alliance offers a library of regional studies including, Eagle Ford, Marcellus, Niobrara, and Utica Formations.

Utilize NuTech's state of the art well analysis results to evaluate and predict reservoir quality across the Haynesville trend

NuTech has analyzed a widespread series of wells across the area using a core based series of models that make it possible to provide an integrated multi-component reservoir and reserve analysis across the Haynesville trend

This study provides a detailed reservoir analysis that evaluates and quantifies both the reservoir properties as well as the associated hydrocarbon potential for each well. A complex modeling program then integrates these individual wells into a regional study that incorporates geostatistical modeling to identify reservoir quality trends and related hydrocarbon in place volumetrics.



Features:

- **3D Structural Model**
- **Stratigraphic Cross Section**
- **3D Petrophysical Property Distribution Model**
- **Utilizes NuLook Shale Vision® and NuView 3D Reservoir Vision®**
- **Includes information on 41 wells Haynesville Trend**

NuTech Energy Alliance
7702 FM 1960 East, Suite 300
Humble, Texas 77346
Office: 281-812-4030
nutechenergy.com

For more information on all of the area studies or to learn more about building your own area study, please visit nutechenergy.com.