

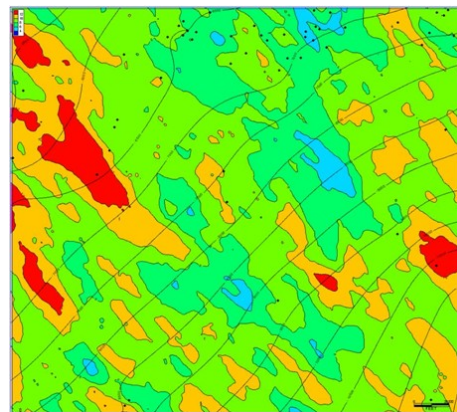
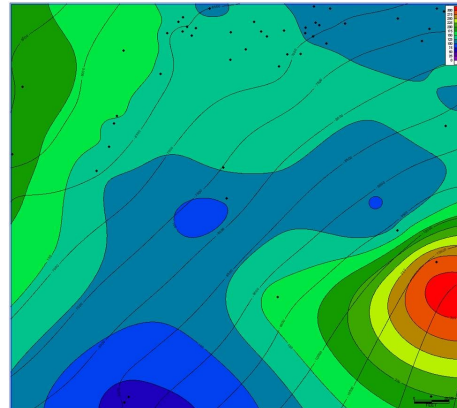
# The Eagle Ford Regional Shale Study

*NuTech Energy Alliance offers a library of studies including, Haynesville, Marcellus, Niobrara and Utica studies.*

Utilize NuTech's state of the art well analysis results to evaluate and predict reservoir quality across the entire Eagle Ford trend

NuTech has analyzed hundreds of wells across the trend using a core based series of models that make it possible to provide an integrated multi-component reservoir and reserve analysis across the Eagle Ford Shale fairway

This study provides a detailed reservoir analysis that evaluates and quantifies both the critical reservoir properties as well as the associated hydrocarbon potential for each well. A complex modeling program then integrates these individual wells into a regional study that incorporates geostatistical modeling to identify reservoir quality trends and related hydrocarbon in place volumetrics.



*Features:*

- *3D Structural Model*
- *Stratigraphic Cross Section*
- *3D Petrophysical Property Distribution Model*
- *Utilizes NuLook Shale Vision® and NuView 3D Reservoir Vision®*
- *The Eagle Ford Study consists of three areas encompassing 233 wells.*

NuTech Energy Alliance  
7702 FM 1960 East, Suite 300  
Humble, Texas 77346  
Office: 281-812-4030  
nutechenergy.com

For more information on all of the area studies or to learn more about building your own area study, please visit [nutechenergy.com](http://nutechenergy.com).