

# NuLook™

Shale Vision

## The Industry's Leading Shale Interpretation

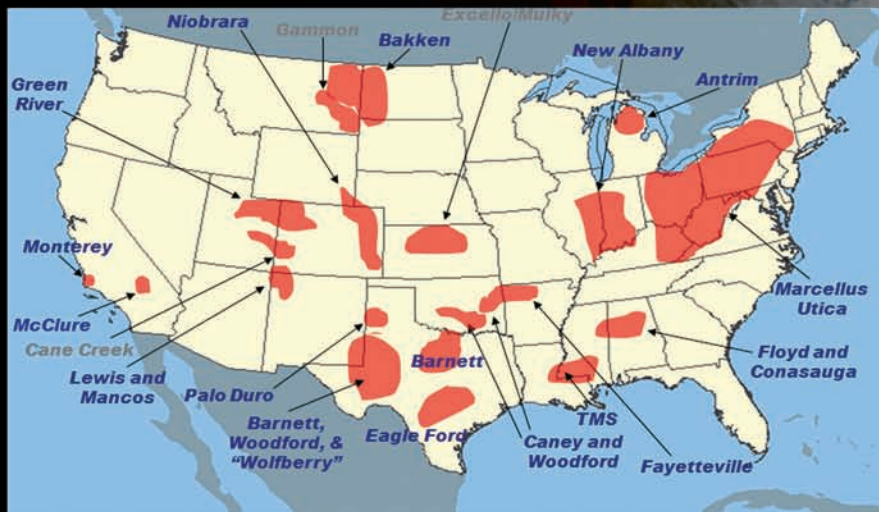
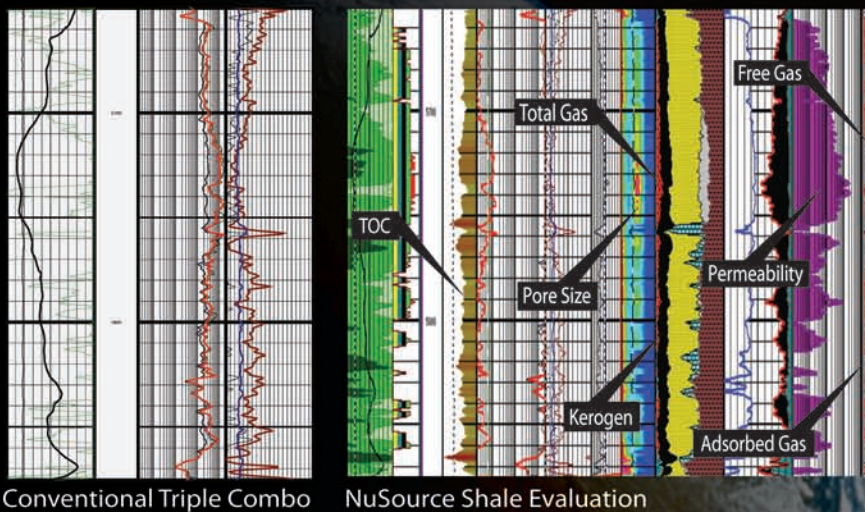
NuTech has redefined Shale Vision with the success of NuSource- A shale analysis that has been run over 2,500 wells during the past three years.

### Features:

- Computes formation mineralogy and pore fluid volumes.
- Estimates TOC, Adsorbed Gas, and Free Gas volumes.
- Accurate determination of clay.
- Eliminates the need for expensive logging suites and rig time for acquisition.
- Enables evaluation of new & existing conventional well logs.
- Accurate permeability determination.
- Provides the input needed for advanced completion design (NuStim).

### NuSource Provides:

- TOC
- Adsorbed Gas
- Heavy Minerals
- Pore Size
- Kerogen
- Free Gas
- Total Gas
- Permeability



### Shale Summary Listing

Zone 1										PERMSHFT uD-FT	TOC %	Total GIP BCF/Sec	Adsorbed GIP BCF/Sec	Free GIP BCF/Sec
Discriminator	PAYFT	RANK	CLAY DEC	PHIE DEC	SW DEC	PERMSH uD	B/hd DEC	B/hyd DEC						
17253						1.532	0.208	0.11	0.09	1.532	2.567	2.288	0.188	2.1
17288	1	3	0.25	0.075	0.59	0.093	0.075	0.031	0.044	0.995	5.106	0.996	0.408	0.588
17290	1	3	0.24	0.082	0.51	0.17	0.082	0.041	0.042	0.942				0.773
17291	1	3	0.24	0.096	0.42	0.345	0.096	0.056	0.04	0.922	1.241	0.462	0.456	1.067
17292	1	3	0.25	0.109	0.4	0.477	0.109	0.065	0.044	0.944	2.911	1.861	0.425	1.236
17293	1	3	0.34	0.104	0.51	0.279	0.104	0.051	0.053	0.354	2.883	4.273	1.299	0.336

### Quantify Reserves