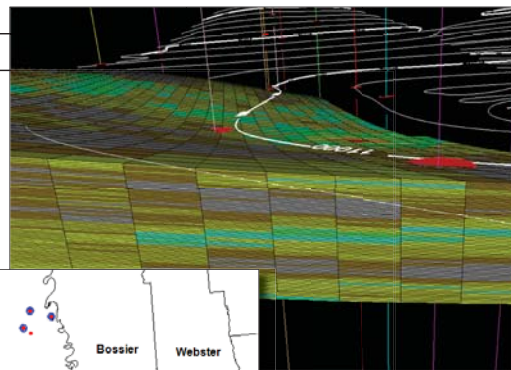
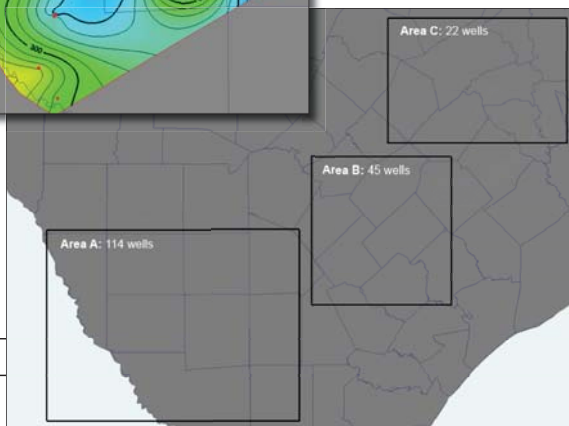


Eagle Ford:

The Eagle Ford Shale of South Texas was deposited during the Late Cretaceous near the shelf edge, and can be divided into two distinct units. The lower unit consists of organic rich carbonate mudstones and claystones that were deposited during a transgressive period in a low-energy, poorly-oxygenated environment. The upper unit consists of carbonate mudstones and carbonaceous siltstones deposited during a regressive highstand in a high-energy, well-oxygenated environment.

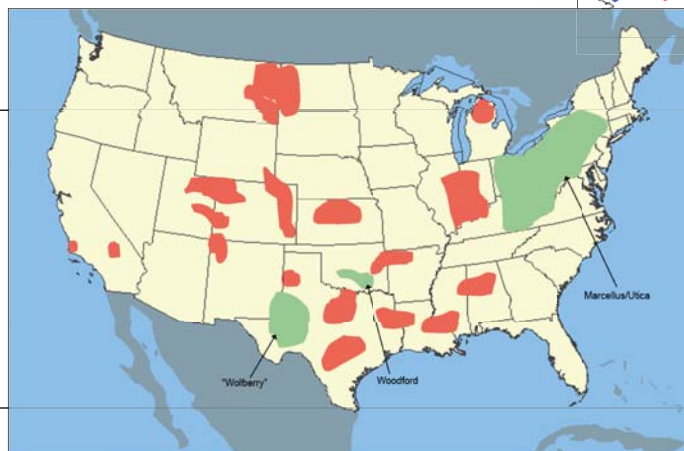
This study provides a petrophysical and geological analysis of 181 Eagle Ford wells that allows insight into the connectivity of textural attributes of the wells with NuLook Shale Vision and NuView 3D Reservoir Vision. Also available to coincide with the study is a GeoTextural rock properties log that depicts the brittleness of the formation.



Haynesville:

The Haynesville Group in East Texas and North Louisiana was deposited during the Upper Jurassic Period near the shelf edge. In general, the Haynesville consists of organic rich shale and claystone that were deposited during a transgressive period in a low-energy, poorly-oxygenated environment.

This study provides a detailed petrophysical and geological analysis of more than 40 Haynesville wells that identifies and quantifies the hydrocarbon column for each well and confirms the stratigraphic validity of the area. It incorporates NuLook Shale Vision, NuView 3D Reservoir Vision and NuStim GeoTextural properties modeling to connect the textural attributes of the wells to one another.



Design a study to fit your needs....

With experience in a number of shale plays throughout the U.S. and the world, NuTech can build a regional field study around the needs of any client.

Future field studies include the Marcellus, Utica, Woodford and "Wolfberry" shales. Which area would you like to see?