

NuSource™

Shale Vision

NuLook™
Textural Vision Family

The Industry's Leading Shale Interpretation

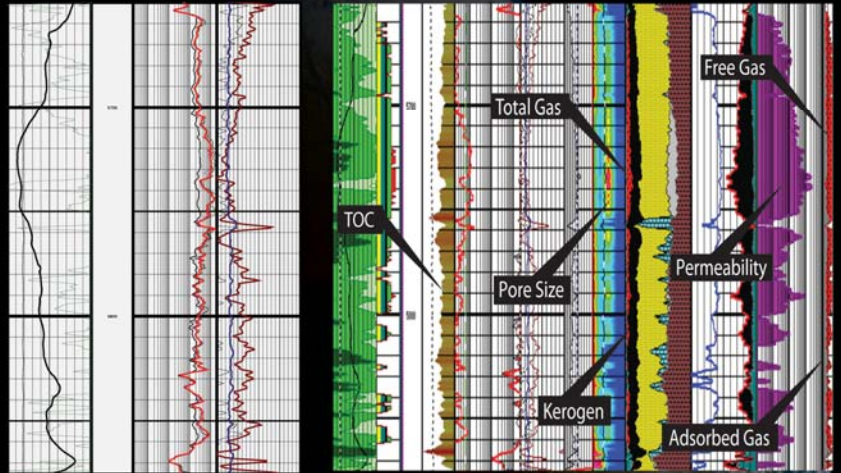
NuTech has redefined Shale Vision with the success of NuSource- A shale analysis that has been run over 2,500 wells during the past three years.

Features:

- Computes formation mineralogy and pore fluid volumes.
- Estimates TOC, Adsorbed Gas, and Free Gas volumes.
- Accurate determination of clay.
- Eliminates the need for expensive logging suites and rig time for acquisition.
- Enables evaluation of new & existing conventional well logs.
- Accurate permeability determination.
- Provides the input needed for advanced completion design (NuStim).

NuSource Provides:

- TOC
- Adsorbed Gas
- Heavy Minerals
- Pore Size
- Kerogen
- Free Gas
- Total Gas
- Permeability



Conventional Triple Combo NuSource Shale Evaluation



Shale Summary Listing

Zone 1										PERMSHFT uD-FT	TOC %	Total GIP BCF/Sec	Adsorbed GIP BCF/Sec	Free GIP BCF/Sec	
Discriminator	PAYFT	RANK	CLAY DEC	PHIE DEC	SW DEC	PERMSH uD	B/Nat DEC	B/Hyd DEC							
17253						1.532		0.208	0.11	0.09	1.532	2.567	2.288	0.188	2.1
17254	1	2	0.45	0.208	0.47	1.532	0.208	0.11	0.09	0.09	5.106	0.996	0.408	0.588	
17289	1	3	0.25	0.875	0.59	0.093	0.075	0.131	0.044	0.025	5.106	0.996	0.408	0.588	
17290	1	3	0.24	0.882	0.51	0.17	0.062	0.141	0.042	0.042	5.106	0.996	0.408	0.588	
17291	1	3	0.24	0.896	0.42	0.345	0.096	0.156	0.04	0.04	5.106	0.996	0.408	0.588	
17292	1	3	0.25	0.199	0.4	0.477	0.109	0.105	0.044	0.044	5.106	0.996	0.408	0.588	
17293	1	3	0.34	0.104	0.51	0.275	0.104	0.151	0.053	0.053	5.106	0.996	0.408	0.588	

Quantify Reserves

Web: www.nutechenergy.com
Phone: 281.812.4030
Fax: 281.812.4027

