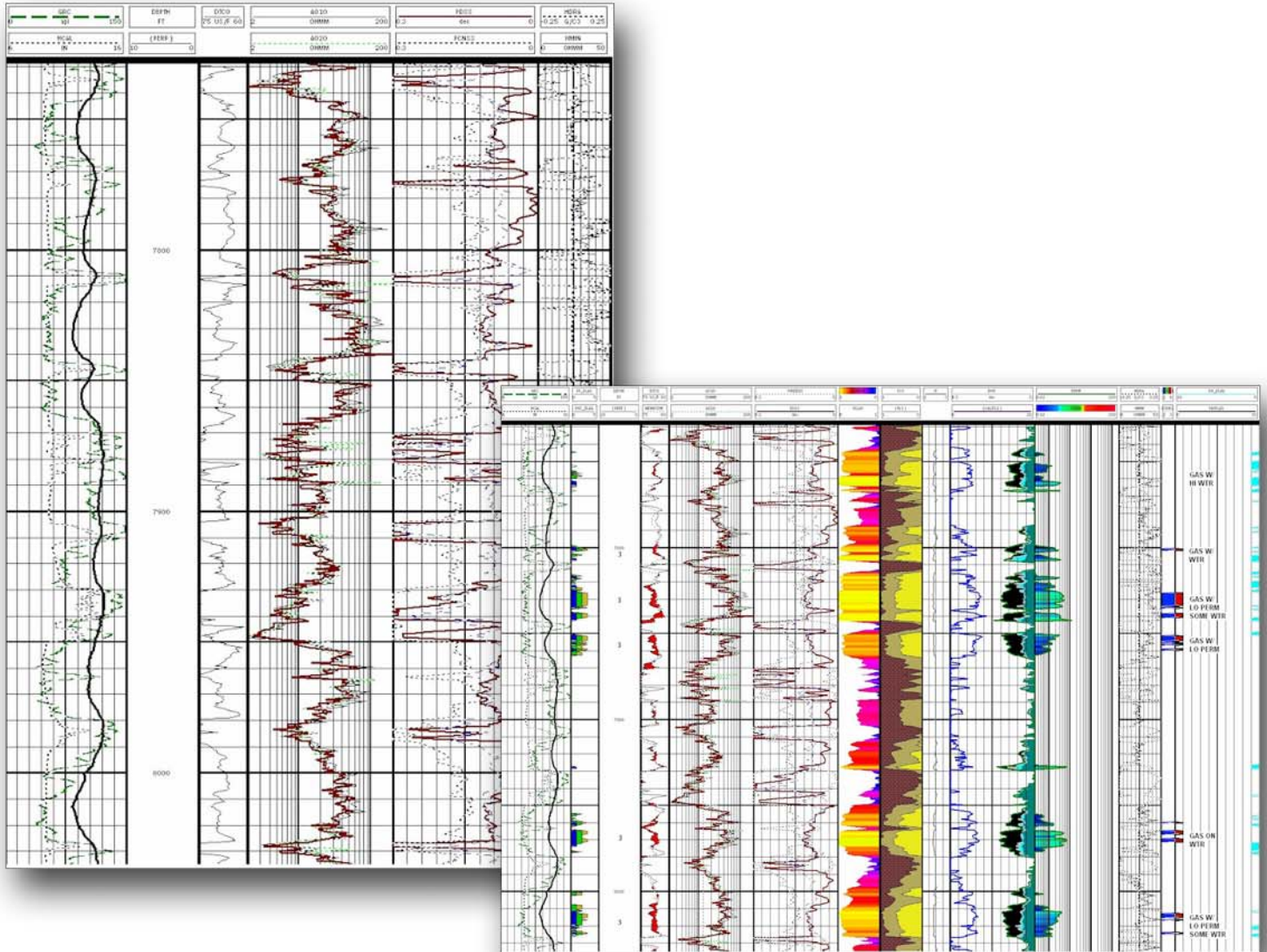


NuLook™ Rocky Mountains - Wyoming Example

Textural Vision

In this Rocky Mountain example from Wyoming, the operator was concerned about quantifying permeability as well as identifying moveable water. Typically the operator would commit to a costly un-focused completion, whereby perforating and stimulating all zones in the well regardless of their potential.



NuTech® not only identified zones with sufficient permeability, which helped the operator design their completion, but was also successful in locating moveable water throughout the well bore. The operator was able to focus their frac fluids into zones that NuLook® identified as being at irreducible water saturation and having sufficient permeability, whereby saving the operator completion costs and improving production.